

ABS 150/150 HT

Sample image

Order symbol : ABS 150/150 HT

EAN : 6418074052322

Product nr : 6081917

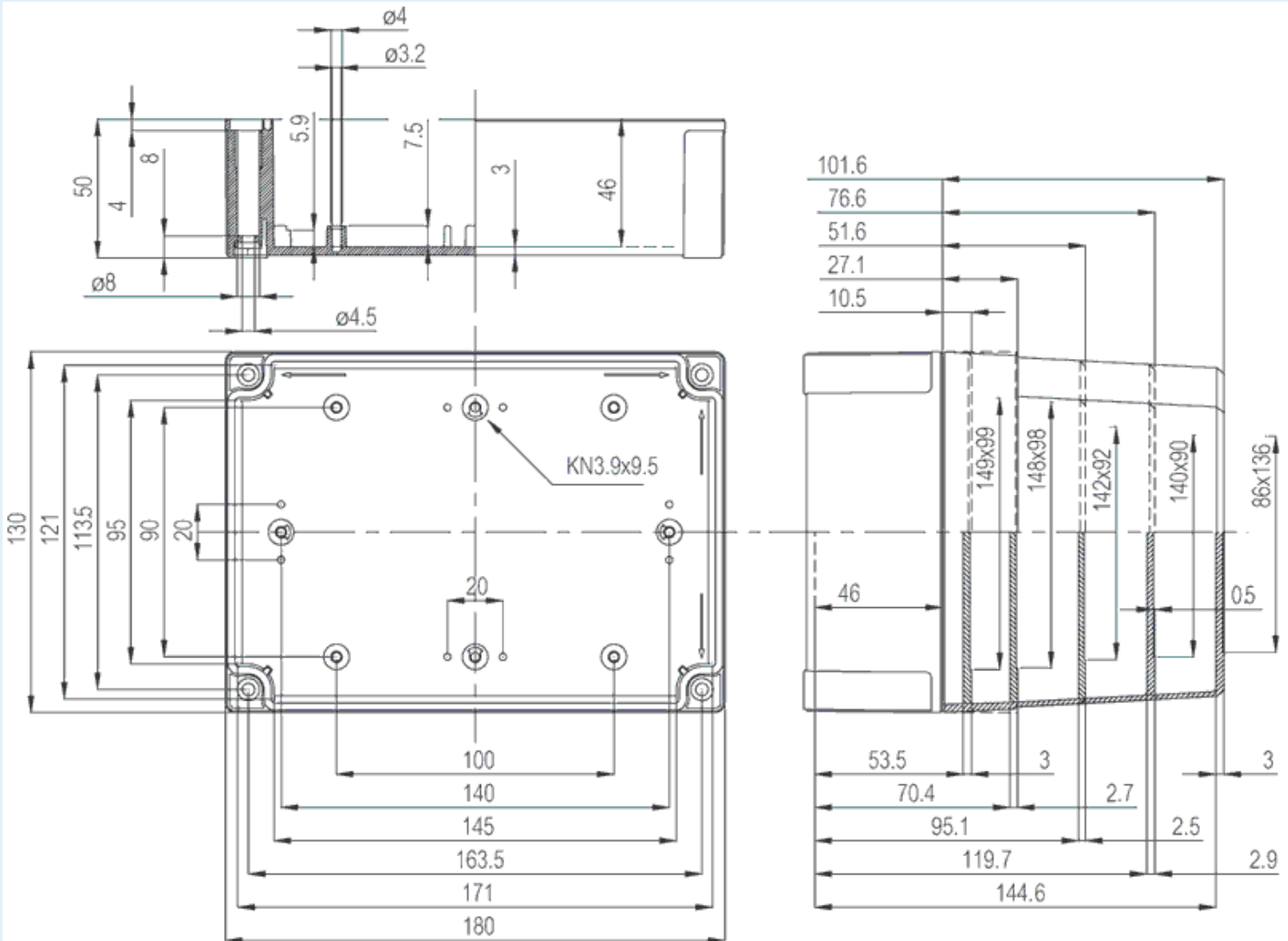
El. number :

Description : Enclosure, ABS

- Finland : 3435240
- Denmark : 8212023754
- Sweden : 6081917

Remarks : High base, smoked transparent cover

Including : Base with TPE gasket. screws for mounting plate/DIN-rail and cover with polyamide cover screws.



Dimensions :	Height	Width	Depth
mm :	180	130	150

Accessories :
MIV 10 DIN-35 Mounting rail, for enclosures:

inch : 7.09 5.12 5.91

Materials :

Material : ABS
Base colour : RAL_7035
Cover colour : Clear transparent
Gasket material : Polyurethane

Temperatures :

Temperature °C (continuous) : -40 ... 60
Temperature °F (continuous) : -40 ... 140

(100 x 35 x 7)

MIV 150 Mounting plate (Galvanized steel), for enclosures:
(148 x 98 x 1.5)
MIV 15 DIN-35 Mounting rail, for enclosures:
(150 x 35 x 7)
FP 22046 Wall fastening lug (4 pcs)
(35 x 16 x 10)

Ratings :

Ingress protection (EN 60529): IP66; IP67;
Impact Resistance (EN 62262): IK07;
electrical_insulation : Totally insulated
Halogen free (DIN/VDE 0472, Part 815) : Yes
UV resistance : -
Flammability Rating : UL 94 HB
Glow Wire Test (IEC 695-2-1) °C : 650C

Certificates :

Certificate FI 41115