

CAB ABS 304018 T

Sample image

Order symbol : CAB ABS 304018 T

Product nr : 8183051

Description : Cabinet, ABS, Smoked transparent door

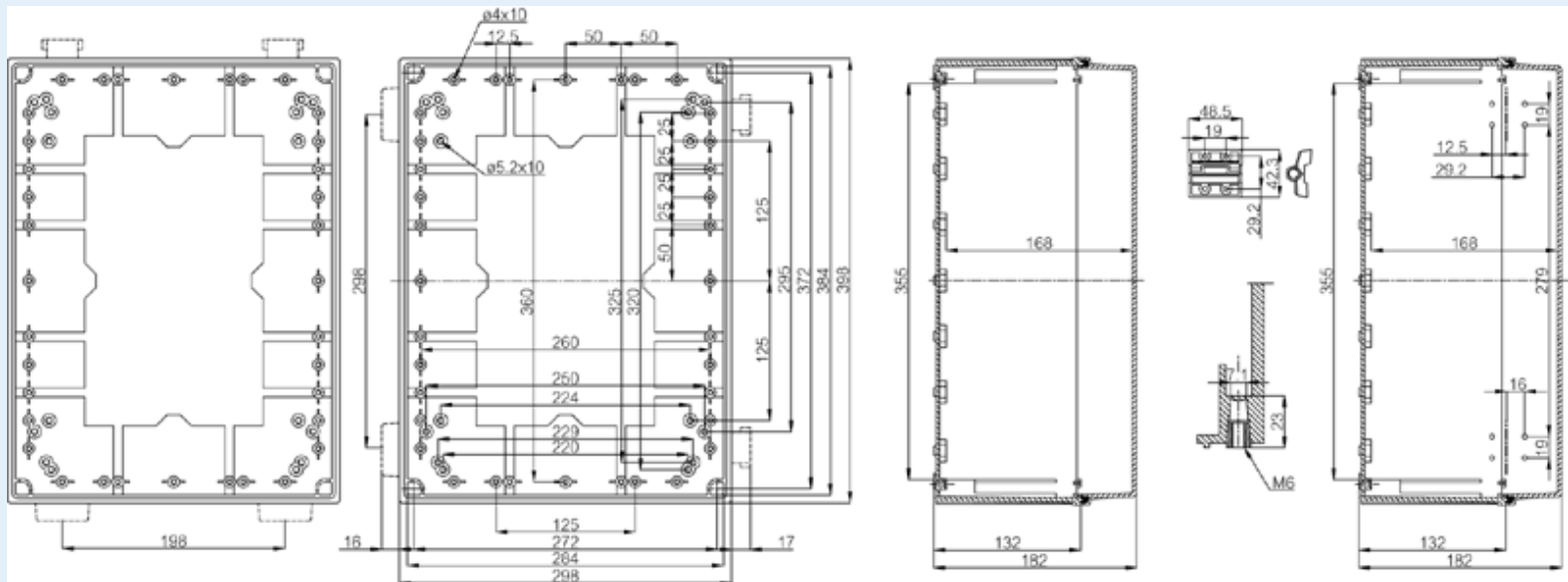
Remarks : Latches on the short side

EAN : 6418074020291

El. number :

- Finland : 3424366
- Denmark : 8212020731
- Sweden : 2540043

Including : Cabinet base. door with PUR gasket. latches. screws for mounting plate/ DIN-rail and corner plugs.



Dimensions :	Height	Width	Depth
mm :	300	400	180
inch :	11.81	15.75	7.09

Materials :

Material :	ABS
Base colour :	RAL_7035
Cover colour :	Smoked grey
Gasket material :	Polyurethane

Accessories :

MB 12225	Swing door set (20 x 20 x 80)
AL	
EKIV 37	DIN-35 Mounting rail, for enclosures: (366 x 35 x 1.5)
EKIV 27	DIN-35 Mounting rail, for enclosures: (266 x 35 x 1.5)
EKIV 43	Mounting plate, for enclosures: (370 x 270 x 1.5)
FP A 43	Swing-out door/Front plate (aluminium), for enclosures: (268 x 368 x 1)

Temperatures :

Temperature °C (continuous) :	-40 ... 60
Temperature °F (continuous) :	-40 ... 140

Ratings :

Ingress protection (EN 60529):	IP65;
Impact Resistance (EN 62262):	IK08;
electrical_insulation :	Totally insulated
Halogen free (DIN/VDE 0472, Part 815) :	Yes
UV resistance :	-
Flammability Rating :	UL 94 HB
Glow Wire Test (IEC 695-2-1) °C :	650C

Certificates :

Certificate FI 40854